

DROPCARD WITH RETAIL RACK HANGER (3.375" X 4.875") - TEMPLATE

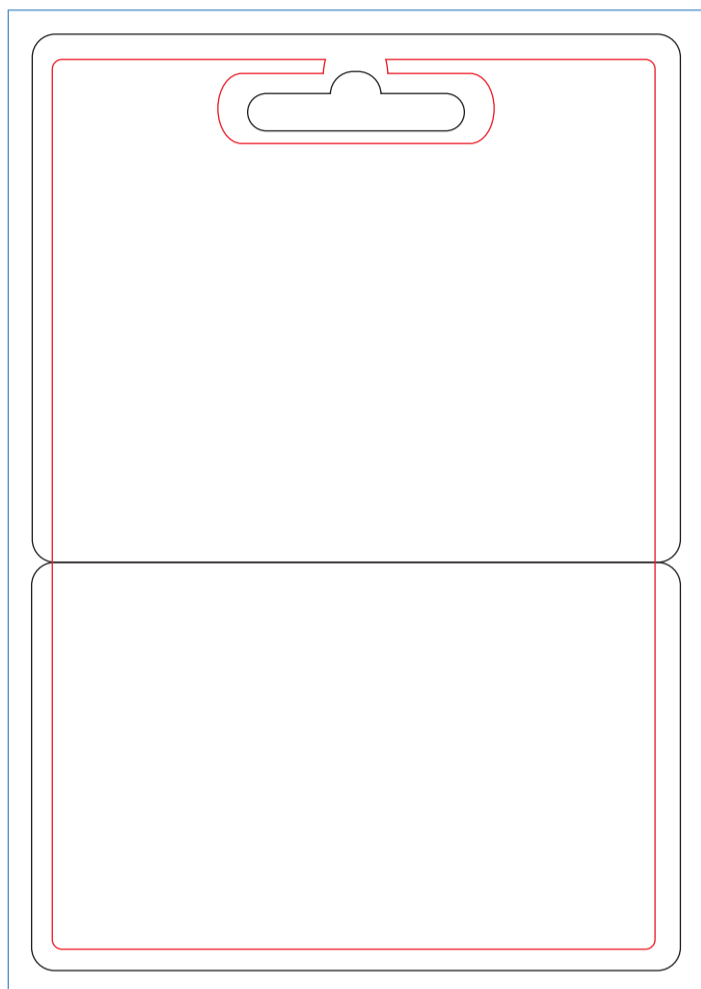
TEMPLATE GUIDE:

RED LINE: Type safety (3.14" x 4.63"). Please make sure your text does not extend beyond this line.

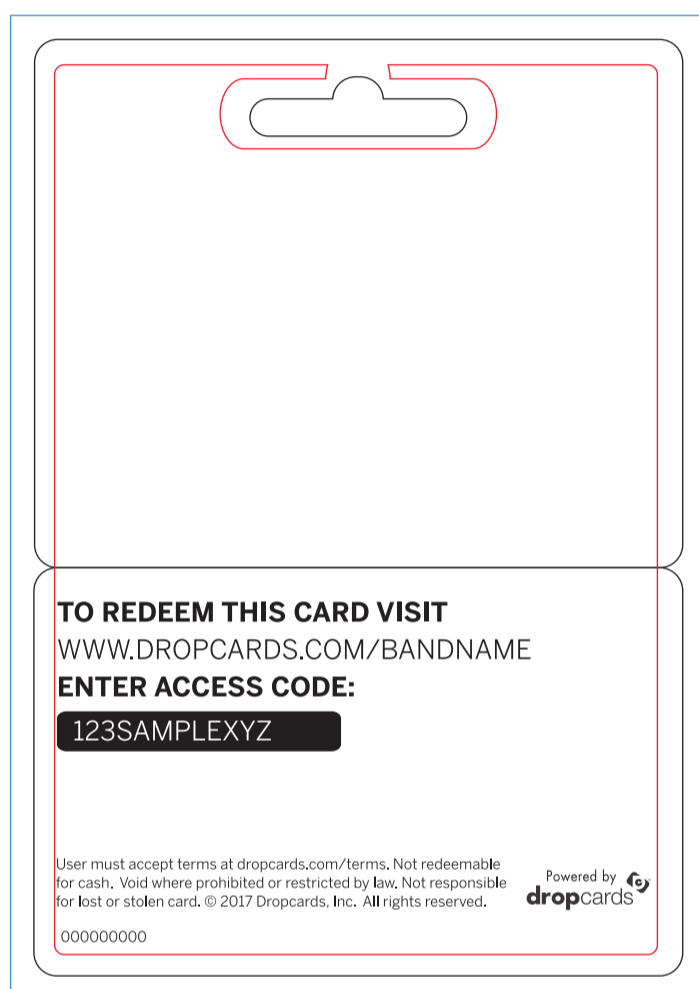
BLACK LINE: Final cut card size. (3.375" x 2.75")

BLUE LINE: Bleed. (3.625" x 5.126") Background graphics must extend to this line.

CARD FRONT



CARD BACK



EDITING THIS CARD BACK:

You do not have to edit this card back. If you choose not to, we'll insert your URL.

If you decide to edit the card back please make sure to include:

- 1) Basic instructions how how to redeem this card
- 2) Your redemption URL
- 3) A space for the access code. Note: Access codes are 10 digits and cannot be printed smaller than 6pt font. They are printed in a standard font like Arial or Helvetica only in either black or white

Art Check List:

Before you submit your artwork for production, please make sure you have done the following:

- | | |
|---|---|
| <input type="checkbox"/> Proofread your art for spelling mistakes. | <input type="checkbox"/> Not flattened the template layer to your artwork. |
| <input type="checkbox"/> Made sure your image resolution is at least 300 DPI. | <input type="checkbox"/> Created the proper amount of bleed. |
| <input type="checkbox"/> Converted the image color mode to CMYK. | <input type="checkbox"/> Made sure all text is within the type safety area. |
| <input type="checkbox"/> (If using Adobe Illustrator) Outlined all fonts. | <input type="checkbox"/> Made sure all layers are editable and intact. |
| <input type="checkbox"/> (If using Adobe Illustrator) Embedded all images. | <input type="checkbox"/> Saved your file with your project name in the title. |
| <input type="checkbox"/> Deleted all unused layers. | <input type="checkbox"/> Saved your file as a .PSD, .AI, .PDF, or .EPS file. |